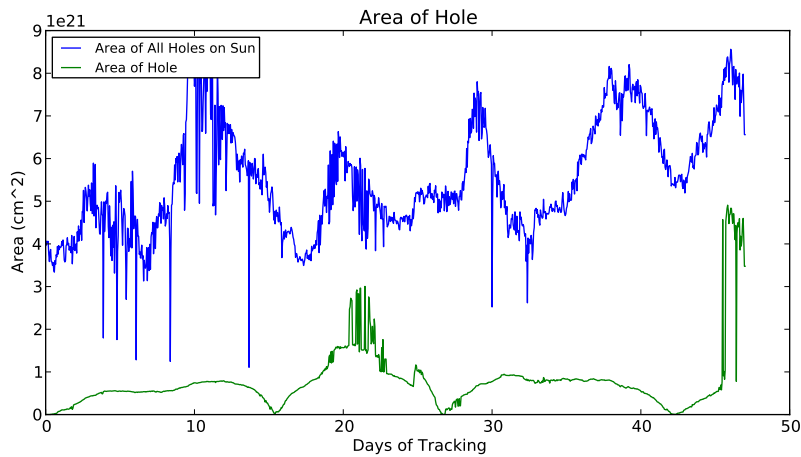


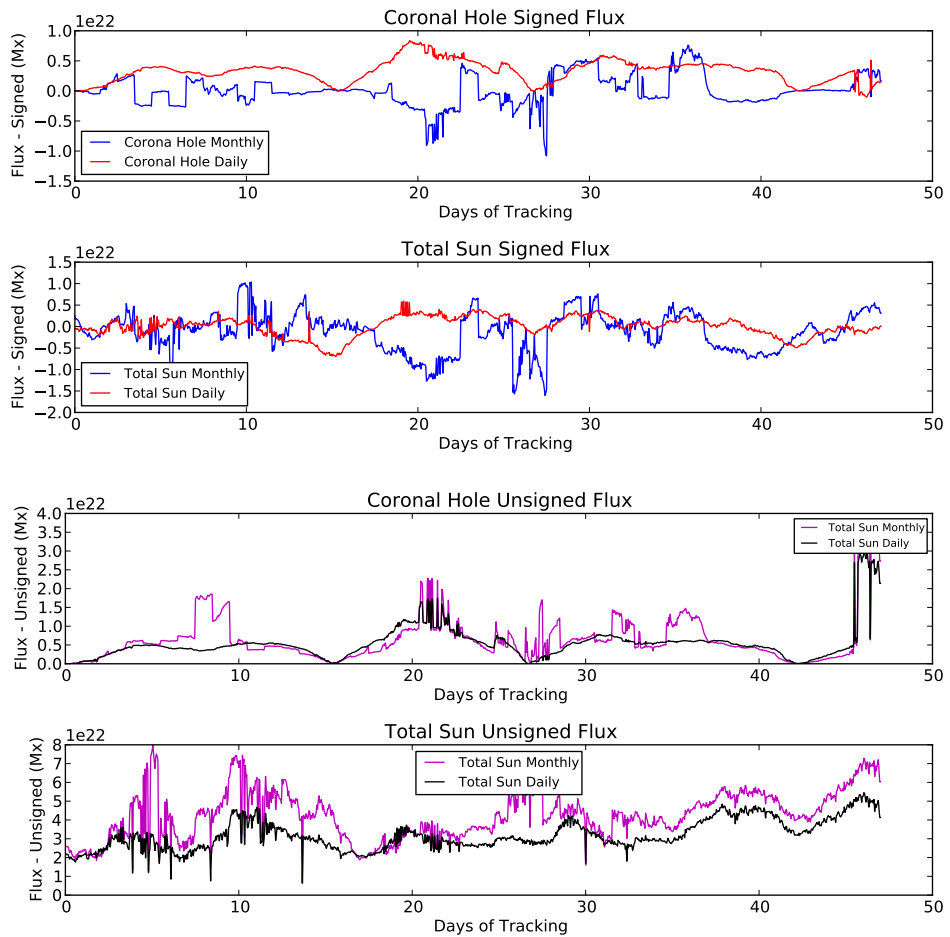
REU: Week Six

David Stauffer

July 8 , 2013

This was the week of the SPD conference. I went to a few hours of lectures most days and understood a little of what was said. I expanded the time range of the coronal hole we're looking at through June 25. After finding all the bad frames, I ran the tracking program on the extended data and it worked quite well. I fixed the tracking program so the user can click on a picture to choose the hole to track. Hopefully, this will make the program easier to use in the future. Here are the extended plots of are, signed flux and unsigned flux:





There's really good correspondence near the end of the unsigned flux plot, just off by some small factor. I'm not sure why they correspond so well there. For the next few weeks while my advisor Chris is gone I'll try to run our automate the routine more fully and run it on more coronal holes in the last couple years.