

Solar activity was at low to moderate levels during the period. Moderate levels were observed on 25 August due to a pair of M-flares originating from Region 2146 (N07, L=344, class/area Dki/300 on 26 August). The first was a M2/1b flare at 25/1511 UTC with associated Type II (707 km/s) and Type IV radio sweeps, a Ten cm radio burst (150 sfu), and a coronal mass ejection (CME) primarily off the west limb in SOHO/LASCO C2 imagery beginning at 25/1548 UTC. The second flare was an M3 at 25/2021 UTC which also had a CME off the west limb in SOHO/LASCO C2 imagery beginning at 25/2048 UTC. Both CMEs were determined to be directed too far west to be geoeffective. The rest of the period was populated with numerous low to mid-level C-class flares, the majority of which were from Regions 2146 and 2149 (N09, L=284, class/area Dkc/280 on 31 August).

An enhancement of the greater than 10 MeV proton flux at geosynchronous orbit was observed beginning at approximately 25/2125 UTC likely associated with the M-class flares from Region 2146. A peak flux value of 1.4 pfu (below S1-Minor) was observed at 25/2300 UTC and thereafter gradually returned to background levels by 27 August.

The greater than 2 MeV electron flux at geosynchronous orbit was at normal levels on 27 August, moderate levels on 25-26 August and again from 28-29 August. High levels were reached on 30-31 August with the flux of 1,510 pfu observed at 30/1550 UTC.

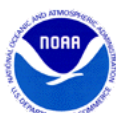
Geomagnetic field activity started at quiet levels on 25-26 August. By early on 27 August, total field increased from 5 nT to a maximum of 15 nT by 27/0848 UTC, solar wind speed slowly increased, and the Bz component went south for the majority of the day reaching a maximum of -14 nT indicative of the arrival of a pair of CMEs that were associated with flare activity from Region 2146 on 22 August. Solar wind continued to slowly increase through 29 August when it became variable between approximately 380 km/s to 480 km/s. Phi angle became mostly positive (away) by late on 27 August and remained so during the rest of the period. This was indicative of a slow transition from CME activity into positive polarity coronal hole high speed streams (CH HSS) by mid to late on 28 August. The geomagnetic field responded with mostly quiet to active conditions from 27 August through 31 August with isolated minor storm periods observed on 28-29 August. Periods of major storm levels were observed at high latitudes on 27-28 August and again on 30-31 August with an isolated severe storm period observed on 29 August.

Space Weather Outlook

01 September - 27 September 2014

Solar activity is expected to be at low levels with a slight chance for M-class (R1-R2, Minor-Moderate) flaring from 01-09 September. Beginning on 10 September and lasting through the end of the forecast period, M-class flare probabilities are expected to increase to a chance as old Regions 2146, 2149, and 2151 (S08, L=253, class/area Cso/140 on 25 August) return to the visible disk.

No proton events are expected at geosynchronous orbit.



The greater than 2 MeV electron flux at geosynchronous orbit is expected to reach high levels on 01-03, 07-09, and 27 September due to CH HSS influence.

Geomagnetic field activity is expected to reach unsettled to active levels from 01-08, 13, and 25-27 September due to CH HSS activity as well as possible recurrent solar sector boundary crossings.



Daily Solar Data

Date	Radio Flux 10.7cm	Sun spot No.	Sunspot Area (10 ⁻⁶ hemi.)	X-ray Background Flux	Flares							
					X-ray			Optical				
					C	M	X	S	1	2	3	4
25 August	135	112	810	B4.8	4	2	0	10	1	0	0	0
26 August	128	81	710	B4.8	4	0	0	5	0	0	0	0
27 August	123	82	670	B4.2	3	0	0	9	0	0	0	0
28 August	119	78	610	B3.5	3	0	0	10	1	0	0	0
29 August	120	73	470	B3.5	6	0	0	5	0	0	0	0
30 August	123	64	560	B4.6	8	0	0	22	0	0	0	0
31 August	125	90	680	B5.1	9	0	0	9	1	0	0	0

Daily Particle Data

Date	Proton Fluence (protons/cm ² -day -sr)			Electron Fluence (electrons/cm ² -day -sr)		
	>1 MeV	>10 MeV	>100 MeV	>0.6 MeV	>2MeV	>4 MeV
	25 August	4.3e+05	2.1e+04	2.8e+03		8.9e+06
26 August	1.4e+06	4.6e+04	2.9e+03		5.7e+06	
27 August	7.8e+05	1.5e+04	2.5e+03		5.5e+04	
28 August	2.7e+05	1.1e+04	2.8e+03		4.4e+06	
29 August	1.8e+05	1.2e+04	2.8e+03		1.8e+07	
30 August	2.9e+05	1.1e+04	2.7e+03		4.1e+07	
31 August	2.2e+05	1.1e+04	2.6e+03		4.1e+07	

Daily Geomagnetic Data

Date	Middle Latitude Fredericksburg		High Latitude College		Estimated Planetary	
	A	K-indices	A	K-indices	A	K-indices
	25 August	4	0-0-1-1-3-1-2-1	0	0-0-0-1-0-0-0-0	4
26 August	5	0-0-1-2-3-1-2-2	2	0-0-0-2-2-0-0-0	4	1-1-1-2-1-1-1-1
27 August	19	1-3-3-4-5-3-3-3	46	1-3-5-5-6-6-6-3	20	1-3-4-4-4-4-3-4
28 August	17	3-5-4-3-2-3-2-1	39	3-5-5-6-5-5-3-2	21	4-5-4-3-3-3-3-2
29 August	20	3-4-3-4-4-1-3-4	37	3-4-5-7-4-3-2-3	21	3-4-3-5-3-2-3-4
30 August	11	3-4-2-2-3-1-2-2	30	3-4-3-6-6-2-2-2	15	4-4-2-3-4-2-3-2
31 August	13	2-1-3-3-3-2-3-4	21	1-1-4-6-4-2-2-3	15	2-2-3-4-3-2-4-4

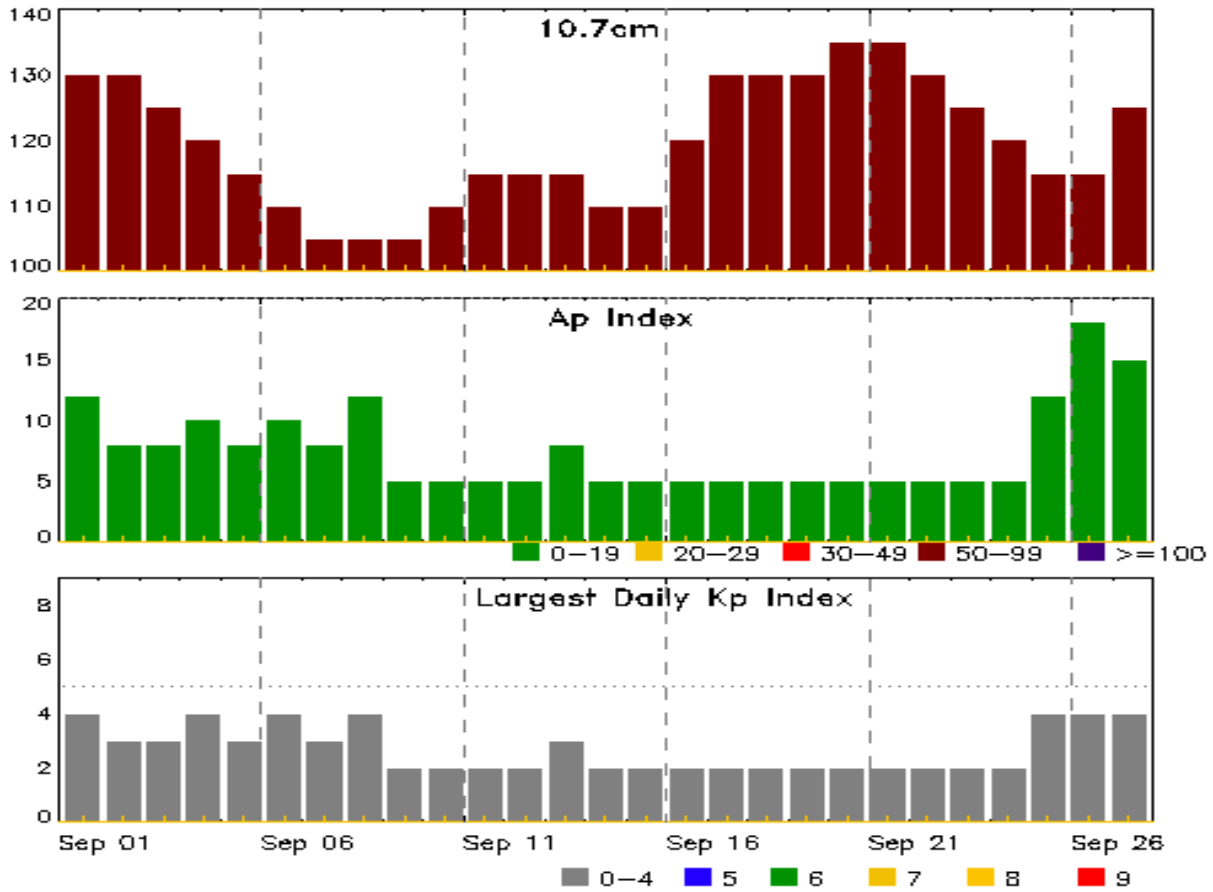


Alerts and Warnings Issued

Date & Time of Issue UTC	Type of Alert or Warning	Date & Time of Event UTC
25 Aug 1530	SUMMARY: 10cm Radio Burst	25/1458 - 1503
25 Aug 1538	ALERT: Type II Radio Emission	25/1508
25 Aug 1539	ALERT: Type IV Radio Emission	25/1518
25 Aug 1754	WATCH: Geomagnetic Storm Category G1 predicted	
27 Aug 0314	WARNING: Geomagnetic K = 4	27/0330 - 1300
27 Aug 0712	WARNING: Geomagnetic K = 5	27/0715 - 1300
27 Aug 0713	EXTENDED WARNING: Geomagnetic K = 4	27/0330 - 1900
27 Aug 0744	ALERT: Geomagnetic K = 4	27/0744
27 Aug 1227	EXTENDED WARNING: Geomagnetic K = 5	27/0715 - 1800
27 Aug 1242	WATCH: Geomagnetic Storm Category G2 predicted	
27 Aug 1724	EXTENDED WARNING: Geomagnetic K = 4	27/0330 - 28/0700
27 Aug 1726	EXTENDED WARNING: Geomagnetic K = 5	27/0715 - 2300
27 Aug 2155	EXTENDED WARNING: Geomagnetic K = 5	27/0715 - 28/0400
28 Aug 0355	EXTENDED WARNING: Geomagnetic K = 4	27/0330 - 28/1400
28 Aug 0355	EXTENDED WARNING: Geomagnetic K = 5	27/0715 - 28/1000
28 Aug 0540	ALERT: Geomagnetic K = 5	28/0540
28 Aug 1020	WARNING: Geomagnetic K = 5	28/1018 - 1600
28 Aug 1020	EXTENDED WARNING: Geomagnetic K = 4	27/0330 - 28/1900
28 Aug 1857	EXTENDED WARNING: Geomagnetic K = 4	27/0330 - 29/0700
29 Aug 0607	EXTENDED WARNING: Geomagnetic K = 4	27/0330 - 29/1400
29 Aug 1050	WARNING: Geomagnetic K = 5	29/1050 - 1400
29 Aug 1202	ALERT: Geomagnetic K = 5	29/1200
29 Aug 1355	EXTENDED WARNING: Geomagnetic K = 4	27/0330 - 30/0700
30 Aug 0628	EXTENDED WARNING: Geomagnetic K = 4	27/0330 - 30/1400
30 Aug 1241	EXTENDED WARNING: Geomagnetic K = 4	27/0330 - 31/1400
30 Aug 1350	ALERT: Electron 2MeV Integral Flux \geq 1000pfu	30/1335
31 Aug 1355	EXTENDED WARNING: Geomagnetic K = 4	27/0330 - 01/1400
31 Aug 1606	CONTINUED ALERT: Electron 2MeV Integral Flux \geq 1000pfu	30/1335



Twenty-seven Day Outlook



Date	Radio Flux 10.7cm	Planetary A Index	Largest Kp Index	Date	Radio Flux 10.7cm	Planetary A Index	Largest Kp Index
01 Sep	130	12	4	15 Sep	110	5	2
02	130	8	3	16	120	5	2
03	125	8	3	17	130	5	2
04	120	10	4	18	130	5	2
05	115	8	3	19	130	5	2
06	110	10	4	20	135	5	2
07	105	8	3	21	135	5	2
08	105	12	4	22	130	5	2
09	105	5	2	23	125	5	2
10	110	5	2	24	120	5	2
11	115	5	2	25	115	12	4
12	115	5	2	26	115	18	4
13	115	8	3	27	125	15	4
14	110	5	2				



Energetic Events

Date	Time			X-ray		Optical Information			Peak		Sweep Freq	
	Begin	Max	Half Max	Class	Integ Flux	Imp/ Brtns	Location Lat CMD	Rgn #	245	2695	II	IV
25 Aug	1446	1511	1531	M2.0	0.032	1B	N05W36	2146	100	150	2	1
25 Aug	2006	2021	2029	M3.9	0.030			2146	84	82		

Flare List

Date	Time			X-ray Class	Imp/ Brtns	Location Lat CMD	Rgn #
	Begin	Max	End				
25 Aug	0101	0115	0118	C1.0	SF	S13E46	2150
25 Aug	0412	0450	0500	C1.0	SF	N09E34	2149
25 Aug	0449	0450	0454		SF	N06W17	2148
25 Aug	0540	0548	0600	C1.1	SF	N10E33	2149
25 Aug	0614	0623	0628		SF	S14E43	2150
25 Aug	0744	0755	0801	B9.7			2146
25 Aug	B0918	U0918	A0949		SF	N11E30	2149
25 Aug	1115	1118	1120	B7.8	SF	S12E41	2150
25 Aug	1153	1154	1202		SF	N13E37	2149
25 Aug	1249	1252	1257	B7.6	SF	N05W38	2146
25 Aug	1413	1425	1431	C1.3	SF	N09W41	2146
25 Aug	1446	1511	1531	M2.0	1B	N05W36	2146
25 Aug	2006	2021	2029	M3.9			2146
26 Aug	0234	0241	0251	C4.0	SF	N10W48	2146
26 Aug	0609	0614	0630	C1.0	SF	N09W49	2146
26 Aug	0923	0928	0933	C1.9	SF	N07W50	2146
26 Aug	1630	1631	1638		SF	N14E19	2149
26 Aug	2254	2325	2338	C5.6	SF	N09W58	2146
27 Aug	0230	0235	0239	C1.4	SF	S11E40	2151
27 Aug	0304	0307	0311		SF	N08W62	2146
27 Aug	0312	0320	0324		SF	N08W62	2146
27 Aug	0334	0342	0428	C4.3	SN	N12E13	2149
27 Aug	0429	0436	0442		SF	N10E06	2149
27 Aug	0509	0520	0528	C1.8	SF	N10W61	2146
27 Aug	B1508	U1510	1517		SF	N12E06	2149
27 Aug	1609	1610	1619		SF	N09W02	2149
27 Aug	1840	1846	1856	B8.1			2148
27 Aug	2218	2222	2225	B5.1			
27 Aug	2246	2249	2253	B6.9	SF	S05E21	2151



Flare List

Date	Time			X-ray Class	Imp/ Brtns	Optical		Rgn #
	Begin	Max	End			Location Lat CMD		
28 Aug	0459	0515	0610	C1.6	1N	N11W70		2146
28 Aug	0517	0520	0522		SF	S18E68		2152
28 Aug	0539	0546	0605		SF	S18E68		2152
28 Aug	0611	0705	0752		SF	S18E68		2152
28 Aug	B0614	U0619	0623		SF	S14E66		2152
28 Aug	0759	0805	0809	C1.1	SF	S06E16		2151
28 Aug	1231	1235	1251		SF	S05E15		2151
28 Aug	1258	1259	1305		SF	S05E15		2151
28 Aug	1353	1357	1359	B7.7				2146
28 Aug	1508	1520	1555	C1.9				2146
28 Aug	1622	1623	1626	B8.4	SF	S16E61		2152
28 Aug	1845	1850	1855	B6.4				2151
28 Aug	1935	1939	1944	B5.8	SF	S06E11		2151
28 Aug	2348	2352	2357	B7.1	SF	S06E08		2151
29 Aug	0220	0226	0231	C1.4				2146
29 Aug	0237	0237	0253		SF	S06E06		2151
29 Aug	0551	0553	0556		SF	N07W67		2148
29 Aug	1543	1552	1602	C4.3				2146
29 Aug	1759	1808	1816	C1.9	SF	N09W76		2148
29 Aug	2235	2244	2257	C1.5				2149
29 Aug	B2300	2318	2337	C1.5	SF	N08W35		2149
29 Aug	2346	0012	0033	C3.0				2149
29 Aug	2351	2351	2359		SF	N08W35		2149
30 Aug	0009	0010	0025		SF	N07W35		2149
30 Aug	0305	0307	0307		SF	S16E42		2152
30 Aug	0416	0428	0439	C2.0	SF	N08W38		2149
30 Aug	B0440	U0500	0539		SF	N06W38		2149
30 Aug	B0440	U0722	0758		SN	S13E39		2152
30 Aug	0449	0456	0508	C3.3				2149
30 Aug	0452	0455	0457		SF	S16E40		2152
30 Aug	0548	0548	0549		SF	S16E39		2152
30 Aug	0556	0611	0614		SF	S16E39		2152
30 Aug	0634	0641	0645	B8.7	SF	S16E39		2152
30 Aug	0659	0804	A1003		SF	S16E36		2152
30 Aug	0711	0712	0729		SF	N07W38		2149
30 Aug	0718	0722	0726	C1.7				2152
30 Aug	0801	0803	0931	C1.0	SF	S14E39		2152
30 Aug	0831	0835	0839	C1.3	SF	N08W39		2149



Flare List

Date	Time			Optical			Rgn #
	Begin	Max	End	X-ray Class	Imp/Brtns	Location Lat CMD	
30 Aug	0942	0947	0959		SF	N09W30	2149
30 Aug	0946	0946	0950		SF	S14E38	2152
30 Aug	0956	1003	1006		SF	S15E37	2152
30 Aug	1012	1015	1024		SF	S15E37	2152
30 Aug	1014	1019	1021	C2.0	SF	N05W41	2149
30 Aug	1025	1026	1031		SF	S15E37	2152
30 Aug	1149	1153	1155	C1.0	SF	S15E37	2152
30 Aug	1422	1425	1429	C2.8	SF	S14E35	2152
30 Aug	1505	1508	1516		SF	S15E35	2152
30 Aug	1829	1833	1844	B9.8			
31 Aug	0047	0049	0053		SF	N12W47	2149
31 Aug	0151	0157	0209	C1.3	SF	N09W49	2149
31 Aug	0337	0338	0350		SF	N10W50	2149
31 Aug	0351	0355	0402	B8.9	SF	N10W50	2149
31 Aug	0513	0530	0557		SF	S15E27	2152
31 Aug	0537	0555	0601	C3.4	1F	N08W52	2149
31 Aug	0721	0728	0741	C1.8	SF	N08W52	2149
31 Aug	0951	1118	1206	C3.6			2149
31 Aug	1207	1211	1214	C7.1			2149
31 Aug	1530	1535	1538	C2.1	SF	N07W58	2149
31 Aug	B1540	U1540	1549		SF	N06W56	2149
31 Aug	1558	1611	1620	C1.2	SF	S15E22	2152
31 Aug	1725	1733	1741	C2.2			2149
31 Aug	2228	2255	2303	C1.0			2152



Region Summary

Date	Location		Sunspot Characteristics				Flares										
	Lat CMD	Lon	Helio 10 ⁶ hemi.	Area	Extent (helio)	Spot Class	Spot Count	Mag Class	X-ray			Optical					
									C	M	X	S	1	2	3	4	
Region 2141																	
14 Aug	N15E60		25	30	4	Dao	9	B					2				
15 Aug	N15E46		26	100	8	Dac	14	B					7				
16 Aug	N16E32		27	120	9	Dac	8	BG									
17 Aug	N16E18		28	110	11	Eso	13	B									
18 Aug	N16E08		25	100	11	Esi	13	B									
19 Aug	N16W05		23	80	11	Esi	9	B									
20 Aug	N16W20		25	50	7	Csi	5	B									
21 Aug	N15W35		27	50	5	Cso	3	B									
22 Aug	N16W49		29	50	2	Hsx	1	A									
23 Aug	N16W63		29	50	1	Hsx	1	A									
24 Aug	N17W76		29	40	1	Hsx	1	A									
25 Aug	N17W88		27	10	1	Axx	1	A									
									0	0	0	9	0	0	0	0	

Crossed West Limb.
 Absolute heliographic longitude: 23

Region 2142																	
14 Aug	N05E54		31	plage													
15 Aug	N05E40		32	plage													
16 Aug	N05E26		33	plage													
17 Aug	N05E12		34	plage													
18 Aug	N05W03		36	plage													
19 Aug	N05W18		37	plage													
20 Aug	N05W33		39	plage													
21 Aug	N05W48		41	plage													
22 Aug	N05W61		41	plage													
23 Aug	N05W76		42	plage													
24 Aug	N09W77		30	30	3	Cao	3	B	1								
									1	0	0	0	0	0	0	0	

Died on Disk.
 Absolute heliographic longitude: 36



Region Summary - continued

Date	Location		Sunspot Characteristics				Flares											
	Lat CMD	Lon	Helio 10 ⁶ hemi.	Extent (helio)	Spot Class	Spot Count	Mag Class	X-ray			Optical							
								C	M	X	S	1	2	3	4			
Region 2143																		
14 Aug	S07E61	24	10	4	Bxo	3	B											
15 Aug	S07E47	25	10	4	Bxo	3	B											
16 Aug	S07E33	26	plage															
17 Aug	S05E19	27	30	3	Cro	3	B					5						
18 Aug	S05E04	29	20	3	Cao	3	B											
19 Aug	S04W12	30	30	5	Dri	5	B					1						
20 Aug	S04W26	31	50	6	Dai	8	B											
21 Aug	S05W39	30	60	6	Dsi	15	B					3						
22 Aug	S05W53	33	80	6	Dac	22	B											
23 Aug	S06W66	32	120	6	Cai	9	B					2						
24 Aug	S04W80	33	70	7	Cao	6	B	2				1						
25 Aug	S03W92	33	10	4	Axx	2	A											
								2	0	0	12	0	0	0	0			

Crossed West Limb.
Absolute heliographic longitude: 29

Region 2146																		
16 Aug	N09E76	343	30	3	Hsx	1	A											
17 Aug	N09E62	344	80	2	Hax	2	A	1				1						
18 Aug	N10E48	345	90	2	Hax	1	A					6						
19 Aug	N08E35	343	150	2	Hsx	1	A					1						
20 Aug	N09E21	343	120	4	Csi	6	B	1				2						
21 Aug	N10E07	344	140	4	Cso	7	B					1						
22 Aug	N10W07	347	140	4	Cso	6	B	2				3						
23 Aug	N10W18	344	170	5	Cso	9	B	1				3						
24 Aug	N09W33	346	280	7	Dki	10	B	1				4						
25 Aug	N09W46	345	290	8	Dki	11	BD	1	2			2	1					
26 Aug	N07W58	344	300	7	Dki	9	BD	4				4						
27 Aug	N07W72	344	240	5	Dai	4	BGD	1				3						
28 Aug	N08W86	346	190	5	Cso	2	BD	2					1					
								14	2	0	30	2	0	0	0			

Crossed West Limb.
Absolute heliographic longitude: 344



Region Summary - continued

Date	Location		Sunspot Characteristics					Flares								
	Lat	CMD	Helio	Area	Extent	Spot	Spot	Mag	X-ray			Optical				
			Lon	10 ⁶ hemi.	(helio)	Class	Count	Class	C	M	X	S	1	2	3	4
Region 2147																
17 Aug	S09E73	333	30	3	Cao	2	B									
18 Aug	S09E61	332	60	3	Hax	3	A	1						1		
19 Aug	S10E46	332	50	2	Hax	2	A				2					
20 Aug	S09E33	331	40	3	Cao	2	B							1		
21 Aug	S10E19	332	20	3	Hax	2	A									
22 Aug	S08E06	334	10	2	Hax	1	A									
23 Aug	S10W08	334	10	1	Hax	1	A									
24 Aug	S08W24	337	plage													
25 Aug	S08W38	338	plage													
26 Aug	S08W52	339	plage													
27 Aug	S08W66	340	plage													
28 Aug	S08W80	340	plage													
									1	0	0	2	2	0	0	0

Crossed West Limb.

Absolute heliographic longitude: 334

Region 2148

20 Aug	N06E41	324	30	7	Dro	5	B	2					4			
21 Aug	N05E27	324	100	10	Dac	23	B	2					2			
22 Aug	N06E14	326	130	11	Eac	16	BG						2			
23 Aug	N07W00	326	110	10	Dao	12	B	1					2			
24 Aug	N07W13	326	50	10	Cao	10	B									
25 Aug	N07W26	326	60	11	Cao	11	B						1			
26 Aug	N02W39	325	10	7	Bxo	4	B									
27 Aug	N08W51	324	10	3	Bxo	6	B									
28 Aug	N08W64	324	10	2	Bxo	3	B									
29 Aug	N08W77	324	plage													
									1				2			
									7	0	0	14	0	0	0	0

Died on Disk.

Absolute heliographic longitude: 326



Region Summary - continued

Date	Location		Sunspot Characteristics					Flares															
	Lat CMD	Helio Lon	Area 10 ⁶ hemi.	Extent (helio)	Spot Class	Spot Count	Mag Class	X-ray			Optical												
								C	M	X	S	1	2	3	4								
Region 2149																							
21 Aug	N12E77	276	70	3	Cso	4	B	1	1		2												
22 Aug	N12E63	277	180	12	Eac	9	BG	7	1		5	3	1										
23 Aug	N11E49	277	120	12	Eac	10	BG	5			11	2											
24 Aug	N11E35	278	190	13	Eac	16	BGD	3			6	1											
25 Aug	N10E21	277	190	14	Eai	14	BG	2			4												
26 Aug	N10E08	277	190	14	Eai	16	B				1												
27 Aug	N10W04	277	160	13	Eai	13	B	1			4												
28 Aug	N10W21	281	180	7	Cso	7	B																
29 Aug	N09W36	283	240	5	Dsi	12	B	3			2												
30 Aug	N09W50	284	280	5	Dhc	11	B	4			7												
31 Aug	N09W63	284	280	6	Dkc	8	B	7			7	1											
								33	2	0	49	7	1	0	0								

Still on Disk.

Absolute heliographic longitude: 277

Region 2150

22 Aug	S13E73	267	60	2	Hsx	1	A														
23 Aug	S13E59	266	130	2	Hsx	1	A														
24 Aug	S13E46	267	120	2	Hsx	1	A				1										
25 Aug	S14E34	266	110	2	Cso	1	B	1			3										
26 Aug	S14E19	267	100	2	Hsx	1	A														
27 Aug	S14E08	265	120	4	Cao	8	B														
28 Aug	S13W05	265	80	2	Hsx	1	A														
29 Aug	S13W20	267	80	2	Hsx	1	A														
30 Aug	S14W32	266	90	2	Hsx	1	A														
31 Aug	S14W46	267	70	2	Hsx	1	A														
								1	0	0	4	0	0	0	0	0					

Still on Disk.

Absolute heliographic longitude: 265



Region Summary - continued

Date	Location		Sunspot Characteristics				Flares											
	Lat CMD	Helio Lon	Area 10 ⁶ hemi.	Extent (helio)	Spot Class	Spot Count	Mag Class	X-ray			Optical							
								C	M	X	S	1	2	3	4			
Region 2151																		
23 Aug	S07E71	255	90	2	Hsx	1	A											
24 Aug	S07E58	255	110	2	Hax	1	A		1			1			1			
25 Aug	S08E47	253	140	5	Cso	2	B											
26 Aug	S08E32	254	110	2	Hsx	1	A											
27 Aug	S08E19	253	140	2	Hax	1	A	1				2						
28 Aug	S07E06	254	120	3	Hsx	1	A					5						
29 Aug	S07W07	254	120	3	Hsx	1	A					1						
30 Aug	S07W21	255	120	3	Hsx	1	A											
31 Aug	S07W34	255	110	8	Cso	3	B											
								1	1	0	9	0	1	0	0			

Still on Disk.

Absolute heliographic longitude: 254

Region 2152

28 Aug	S18E55	205	30	2	Cro	4	B	1				5						
29 Aug	S18E41	206	20	4	Cro	6	B											
30 Aug	S17E27	207	70	6	Dai	11	BG	4				15						
31 Aug	S16E15	206	200	9	Dac	24	BG	2				2						
								7	0	0	22	0	0	0	0	0		

Still on Disk.

Absolute heliographic longitude: 206

Region 2153

29 Aug	S11E18	229	10	2	Axx	3	A											
30 Aug	S10E03	231	plage															
31 Aug	S11W12	233	20	3	Cro	4	B											
								0	0	0	0	0	0	0	0	0		

Still on Disk.

Absolute heliographic longitude: 231

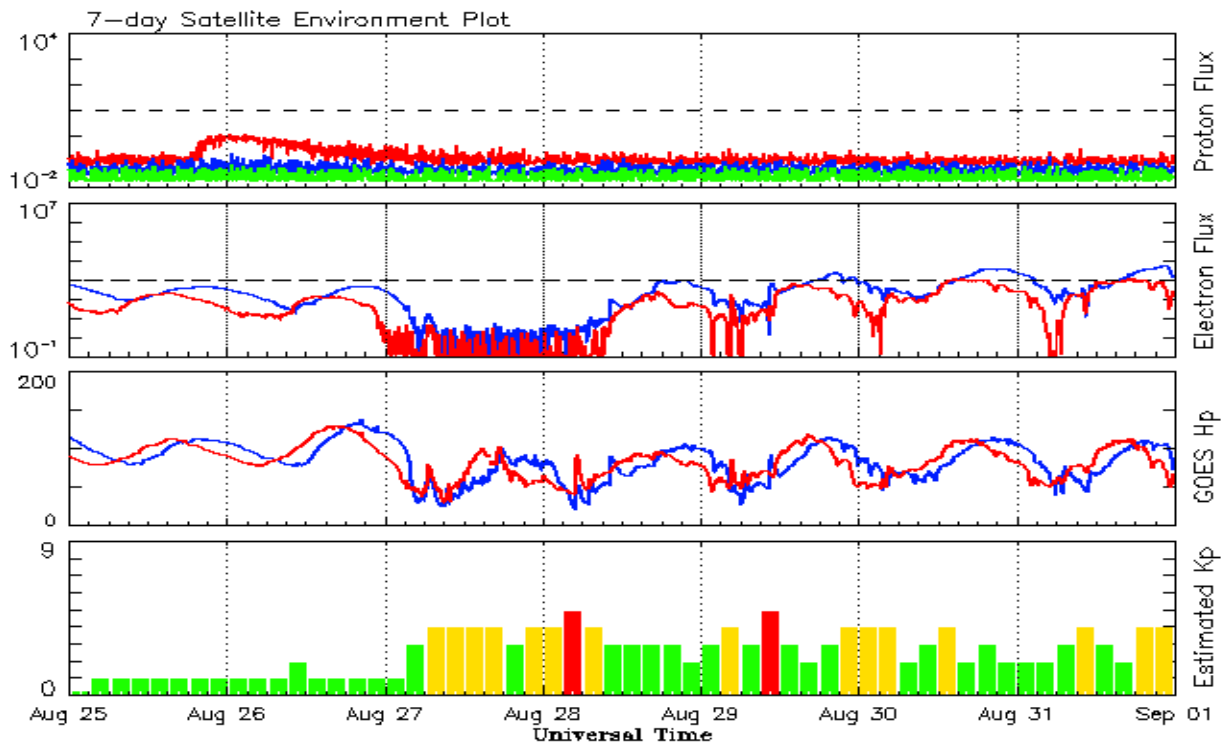


Recent Solar Indices (preliminary)
Observed monthly mean values

Month	Sunspot Numbers					Radio Flux		Geomagnetic	
	Observed values		Ratio	Smooth values		Penticton	Smooth	Planetary	Smooth
	SEC	RI	RI/SEC	SEC	RI	10.7 cm	Value	Ap	Value
2012									
September	84.0	61.4	0.73	83.7	58.1	123.2	118.9	8	7.8
October	73.5	53.3	0.73	85.0	58.6	123.3	119.2	9	7.4
November	89.2	61.8	0.69	87.3	59.7	120.9	120.1	6	7.3
December	60.4	40.8	0.68	88.0	59.6	108.4	120.1	3	7.5
2013									
January	99.8	62.9	0.63	87.1	58.7	127.1	118.9	4	7.5
February	60.0	38.1	0.63	86.7	58.4	104.4	118.0	5	7.4
March	81.0	57.9	0.71	85.7	57.6	111.2	117.1	9	7.4
April	112.8	72.4	0.64	86.7	57.9	125.0	116.6	5	7.2
May	125.5	78.7	0.63	90.5	59.9	131.3	118.1	10	7.0
June	80.1	52.5	0.66	94.4	62.6	110.2	120.9	13	7.1
July	86.1	57.0	0.66	97.9	65.5	115.6	123.9	9	7.3
August	90.2	66.0	0.73	103.7	68.9	114.7	127.9	9	7.6
September	55.0	37.0	0.67	111.0	73.0	102.7	132.3	5	7.8
October	127.1	85.6	0.67	114.3	74.9	132.3	134.7	7	7.8
November	125.7	77.6	0.62	114.6	75.3	148.4	135.4	5	7.9
December	118.2	90.3	0.76	115.4	75.9	147.7	135.9	5	7.5
2014									
January	125.9	81.8	0.65	117.7	77.3	158.6	137.3	6	7.1
February	174.6	102.3	0.59	119.5		170.3	138.6	12	6.9
March	141.1	91.9	0.65			149.9		6	
April	130.5	84.7	0.65			144.3		9	
May	116.8	75.2	0.64			130.0		7	
June	107.7	71.0	0.66			122.2		7	
July	113.6	72.5	0.64			137.3		5	
August	106.2					124.7		9	

Note: Values are final except for the most recent 6 months which are considered preliminary.
Cycle 24 started in Dec 2008 with an RI=1.7.





*Weekly Geosynchronous Satellite Environment Summary
Week Beginning 25 August 2014*

The proton flux plot contains the five-minute averaged integral proton flux (protons/cm²-sec -sr) as measured by the SWPC Primary GOES satellite, near West 75, for each of three energy thresholds: greater than 10, 50, and 100 MeV.

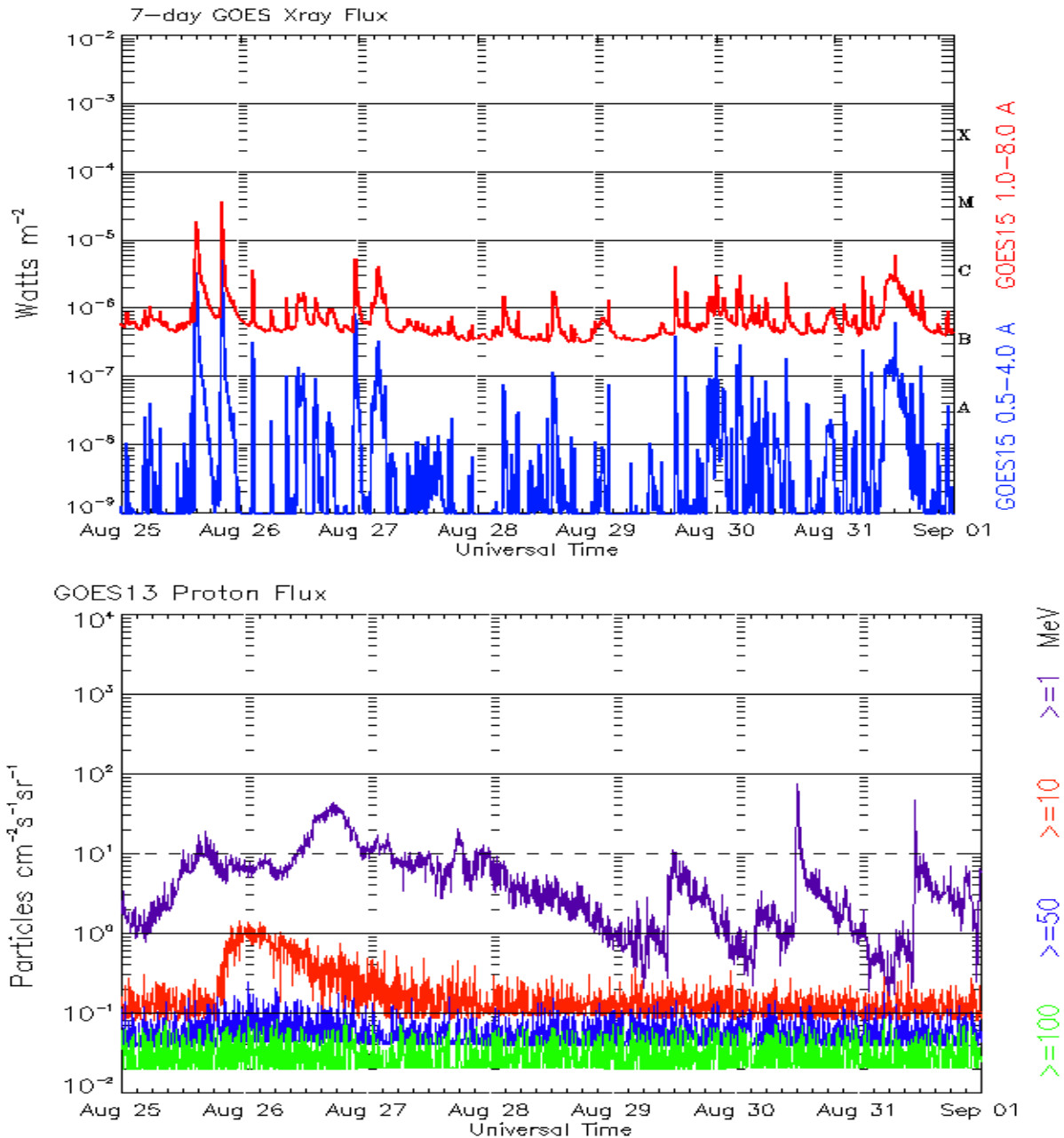
The electron flux plot contains the five-minute averaged integral electron flux (electrons/cm²-sec -sr) with energies greater than 2 MeV by the SWPC Primary GOES satellite.

The Hp plot contains the five minute averaged Hp magnetic field component in nanoteslas (nT) as by the SWPC Primary GOES satellite. The Hp component is parallel to the spin axis of the satellite, which is nearly parallel to the Earth's rotation axis.

The Estimated 3-hour Planetary Kp-index is derived at the NOAA Space Weather Prediction Center using data from the following ground-based magnetometers: Boulder, Colorado; Chambon la Foret, France; Fredericksburg, Virginia; Fresno, California; Hartland, UK; Newport, Washington; Sitka, Alaska. These data are made available thanks to the cooperative efforts between SWPC and data providers around the world, which currently includes the U.S. Geological Survey, the British Geological Survey, and the Institut de Physique du Globe de Paris.

The data included here are those now available in real time at the SWPC and are incomplete in that they do not include the full set of parameters and energy ranges known to cause satellite operating anomalies. The proton and electron fluxes and Kp are 'global' parameters that are applicable to a first order approximation over large areas. H parallel is subject to more localized phenomena and the measurements generally are applicable to within a few degrees of longitude of the measuring satellite.





*Weekly GOES Satellite X-ray and Proton Plots
Week Beginning 25 August 2014*

The x-ray plots contains five-minute averages x-ray flux (Watt/m²) as measure by the SWPC primary GOES X-ray satellite, usually at West 105 longitude, in two wavelength bands, 0.05 - 0.4 and 0.1 - 0.8 nm. The letters A, B, C, M and X refer to x-ray event levels for the 0.1 - 0.8 nm band.

The proton plot contains the five-minute averaged intergral flux units (pfu = protons/cm² -sec -sr) as measured by the primary SWPC GOES Proton satellite for each of the energy thresholds: >1, >10, >30, and >100 MeV. The P10 event threshold is 10 pfu at greater than 10 MeV.



Preliminary Report and Forecast of Solar Geophysical Data (The Weekly)

Published every Monday by the Space Weather Prediction Center.

U.S. Department of Commerce
NOAA / National Weather Service
Space Weather Prediction Center
325 Broadway, Boulder CO 80305

Notice: The 27-day Outlook, Satellite Environment, X-ray and Proton plots have been redesigned. Comments and suggestions are welcome SWPC.Webmaster@noaa.gov

The Weekly has been published continuously since 1951 and is available online since 1997.

<http://spaceweather.gov/weekly/> -- Current and previous year

<http://spaceweather.gov/ftpmenu/warehouse.html> -- Online archive from 1997

<http://spaceweather.gov/ftpmenu/> -- Some content as ascii text

<http://spaceweather.gov/SolarCycle/> -- Solar Cycle Progression web site

<http://spaceweather.gov/contacts.html> -- Contact and Copyright information

http://spaceweather.gov/weekly/Usr_guide.pdf -- User Guide

